

FAST FACTS . . .

Area

676,577 Square Kilometers.

Time

UTC (GMT) + 6.5 Hours

Climate

Myanmar is an all year round destination. Hilly regions in the north and northeast enjoy cool temperate weather. Rainfall is also very low in central regions during the rainy season.

Population

The Union of Myanmar has a population of over 57 million. The major racial groups are Bamar, Kachin, Kayah, Kayin, Chin, Mon, Rakhine and Shan. The people are called Myanmar.

Language

Myanmar, several dialects and English.

Religion

Over 80 percent of Myanmar embrace Theravada Buddhism. There are Christians, Muslims, Hindus and some animists.

Currency

The local currency is the "Kyat" which is divided into 100 pyas. Kyat notes are issued in denominations of 1, 5, 10, 15, 20, 45, 50, 90, 100, 200, 500 and 1000.

Business Hours

Banks : 09:30 – 15:00 Mon – Fri

Offices : 09:30 – 16:30 Mon – Fri

Airport Tax

10 US Dollars for departure at international gateways.

Customs

Foreign currencies (above USD 2000), jewellery, cameras and electronic goods must be declared to the customs at the Airport.

Exports of antiques and archaeologically valuable items are prohibited.

Foreign Exchange Certificate (FEC)

Foreign Exchange Certificate, issued for the convenience of visitors, is accepted by hotels, airlines, travel agencies, taxis, restaurants and convenient for entrance fees to pagodas, museums, parks, etc. FECs are issued in US \$ 20, \$ 10, \$ 5 and \$ 1 denominations.

Licensed Tour Companies

(a)	Foreign Company	1
(b)	J.V Company	16
(c)	Local Company	750

Total 767

Licensed Tourist Transportation

(a)	Coach (26 to 50 seater)	102
(b)	Mini Bus (21 to 25 seater)	30
(c)	Van (7 to 20 Seater)	27
(d)	Saloon (3 to 5 seater)	26
(e)	Motor Boat	128
(f)	Boat	12
(g)	Yacht	32
(h)	Hot Air Balloon	1

Total 358

Licensed Tour Guides

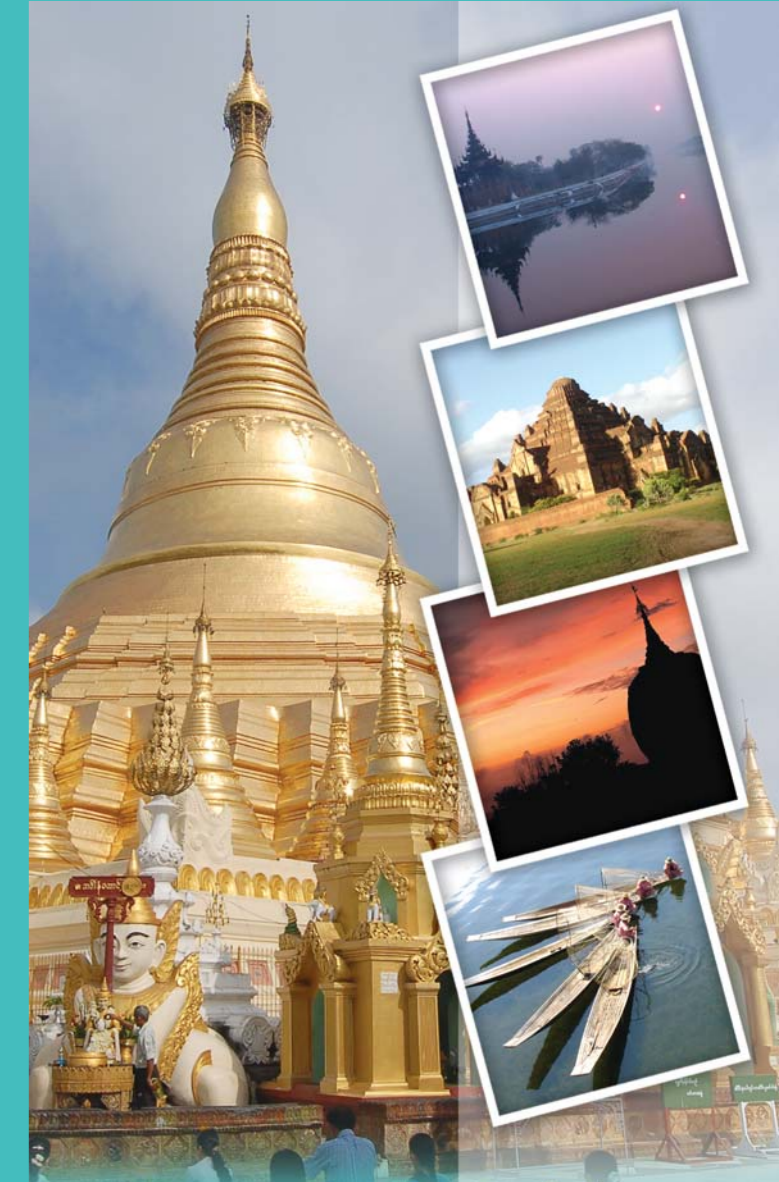
(a)	English	3152 *
(b)	Japanese	594
(c)	French	281
(d)	Chinese	211
(e)	Thai	120
(f)	German	216
(g)	Russia	26
(h)	Italian	38
(i)	Korean	20

Total 4658

* (Spanish Guide License - 94 included)

Hotels / Motels/ Guest Houses

Sr.	Place	Numbers	Rooms
1.	Aungban	2	38
2.	Bagan	82	1945
3.	Bago	10	266
4.	Bhamaw	2	82
5.	Chaungtha	14	492
6.	Dawei	2	54
7.	Hpa-an	3	69
8.	Kalay	2	58
9.	Kalaw	21	329
10.	Kawthaung	5	365
11.	Kyaikhto	8	210
12.	Kyaington	11	343
13.	Kyaukpataung	1	14
14.	Koongyangone	1	30
15.	Lashio	4	149
16.	Loikaw	1	24
17.	Magwe	5	78
18.	Mandalay	68	2902
19.	Mawlamyine	6	114
20.	Meikhtila	5	98
21.	Mogok	1	11
22.	Monywa	5	123
23.	Mrauk-U	4	80
24.	Muse	8	335
25.	Myitkyina	11	293
26.	Nay Pyi Taw	6	141
27.	Ngapali	10	402
28.	Ngwesaung	19	840
29.	Nyaung Shwe	42	894
30.	Pakokku	2	23
31.	Patheingyi	6	158
32.	Pindaya	5	152
33.	Putao	1	8
34.	Pyay	10	175
35.	Pyinmana	1	25
36.	Pyin Oo Lwin	19	335
37.	Sagaing	2	19
38.	Shwe Nyaung	1	16
39.	Sittwe	6	124
40.	Tachileik	11	526
41.	Taunggyi	16	508
42.	Taungoo	10	211
43.	Thazi	2	26
44.	Thipaw	3	52
45.	Yangon	165	6824
Total		619	19961



Myanmar Tourism Statistics Fiscal Year 2007-2008

Ministry of Hotels and Tourism

Building No. (33) Nay Pyi Taw,
Union of Myanmar

Tel : 95 67 - 406451, 406130, 406057

Fax : 95 67 - 406056, 406057, 406062, 406063

E-mail : dg.dht@mptmail.net.mm

Website : www.tourismmyanmar.org



Tourist Arrivals

	2006-2007	2007-2008
Yangon Entry Point	276613	214312
Mandalay & Bagan Gateways	5763	5552
Border Tourism	372226	501946
Total	654602	721810

Yangon Entry Point

(Including Tourist Arrivals through border points to Yangon)

	2006-2007	2007-2008
(1) Package	69277	40791
(2) FIT	129503	99248
(3) Others	77833	74273
Total	276613	214312

Border Tourism

(Including day return visitors)

	2006-2007	2007-2008
(1) North Eastern Region	45486	57609
(2) Eastern Region	155563	301264
(3) South Eastern Region	171177	143073
Total	372226	501946

Tourism Income

FiscalYear	2006-2007	2007-2008
Total Earnings	US\$ 198.48(M)	US\$ 172.47(M)
Average Expenditure per Person Per Day	US\$ 101	US\$ 112
Average Length of Stay	7 (Days)	7 (Days)

Visa Formalities

A valid Passport with Entry Visa is required for all visitors. The entry visa to Myanmar is applicable at Myanmar Embassies and Consulate General Offices abroad and it is valid for 28 days.

Overland entry

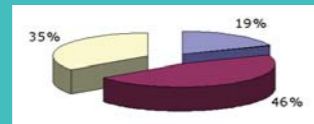
Overland entry is permitted to Thai, Chinese and Indian tourists with border passes and to third party tourists with visa at designated check points along Myanmar – Thailand, Myanmar – China and Myanmar – India Borders. Tourists with valid passports and visa can leave by air from Yangon.

Visa on Arrival

Visa on arrival is granted only to packaged cruise liner and chartered flight tourists; and to packaged tour groups from places where there are no Myanmar representation. Visa on Arrival is applicable only through licensed travel agencies registered in Myanmar. The Ministry of Hotels and Tourism will endorse to the Immigration authorities on case by case basis.

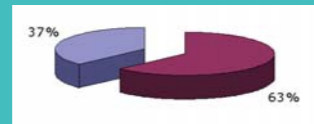
Types of Tourist

Package Tour Groups	19 %
FIT	46 %
Others	35 %



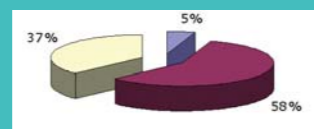
Tourist Arrivals by Gender Group

Male	63 %
Female	37 %



Tourist Arrivals by Age Group

Age 1-20	5 %
Age 21-50	58 %
Age 51+	37 %



Visitors by Nationalities			
No.	Country	2007-2008	%
ASIA		139666	63.52
1.	THAILAND	33377	15.18
2.	CHINA	31122	14.16
3.	KOREA	13448	6.12
4.	TAIWAN	12712	5.78
5.	JAPAN	12627	5.74
6.	SINGAPORE	8795	4.00
7.	MALAYSIA	8394	3.82
8.	INDIA	7652	3.48
9.	HONG KONG	2856	1.30
10.	BANGLADESH	1000	0.45
11.	OTHERS	7683	3.49
WEST EUROPE		49925	22.70
1.	GERMANY	11116	5.06
2.	FRANCE	10889	4.95
3.	SPAIN	5930	2.70
4.	U.K	5578	2.54
5.	ITALY	5460	2.48
6.	SWITZERLAND	3130	1.42
7.	BELGIUM	1808	0.82
8.	AUSTRIA	1611	0.73
9.	OTHERS	4403	2.00
NORTH AMERICA		16310	7.42
1.	AMERICA	13825	6.29
2.	CANADA	2485	1.13
OCEANIA		6937	3.16
1.	AUSTRALIA	6063	2.76
2.	NEWZEALAND	847	0.39
3.	OTHERS	27	0.01
EAST EUROPE		3822	1.74
1.	RUSSIA	1849	0.84
2.	OTHERS	1973	0.90
MIDDLE EAST		1522	0.69
OTHER AMERICAS		1277	0.58
AFRICA		405	0.18
TOTAL		219864	100

Tourist Arrivals by Special Tours

Special Charter Flight Tours

FiscalYear	No. of Charter Flt	No. of Pax
2006-2007	64	8147
2007-2008	42	4758

Tourist Arrivals by Cruises

FiscalYear	No. of Cruises	No. of Pax
2006-2007	6	1752
2007-2008	5	2540

Yachting Tours

FiscalYear	No. of Pax	Income(US\$)
2006-2007	2127	226505
2007-2008	2150	278955

Foreign Investment in Hotels & Commercial Complexes

Sr.	Projects	Rooms	Investment US\$(M)	Remarks
1.	30	4860	772.419	Completed
2.	5	1315	348.500	Under Construction
	35	6175	1120.919	

STATEMENT SHOWING LOAD FACTOR OF AIRLINES FOR THE YEAR 2007-2008 (Foreigners Only)

Sr.	Route	No. of Flights	Seat Capacity	Occupied Seats	Percentages (%)
1.	BKK-YGN	2134	395662	128640	32.51%
2.	Chiangmai -YGN	70	4060	1465	36.08%
3.	Singapore -YGN	882	118464	22733	19.19%
4.	Kualalumpur—YGN	426	62169	8861	14.25%
5.	Kunming-YGN	142	18176	9506	52.30%
6.	Hongkong-YGN	28	4536	858	18.91%
7.	Calcutta-YGN	86	12384	2141	17.29%
8.	Guang Zhou-YGN	74	8880	3433	38.66%
9.	Taipei-YGN	137	23016	11946	51.90%
10.	Doha-YGN	128	28160	8305	29.49%
11.	Kunming-MDL	183	9150	4069	44.47%
12.	Chiangmai-MDL	51	2958	1130	38.20%
13.	Special Flight	138	-	5433	-
	Total	4479	687615	208520	30.33%
	International Visitors		208520		30.33%
	Myanmar Nationals		193533		28.14%
	Grand Total		402053		58.47%